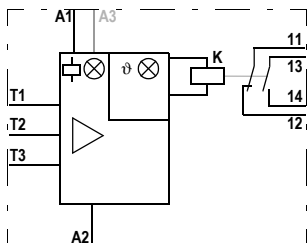
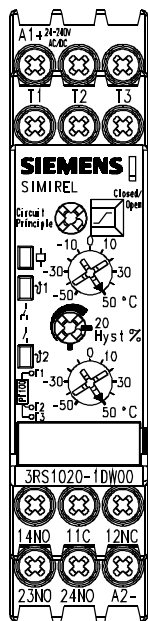
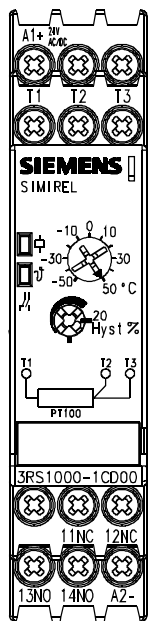
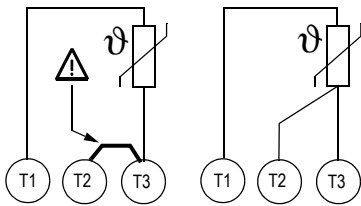
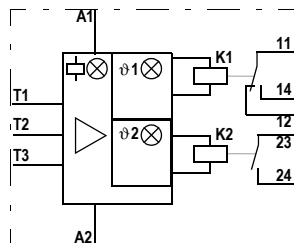


PT 100

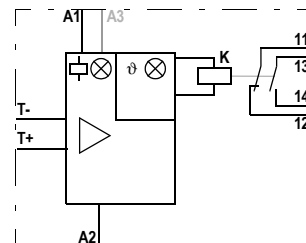
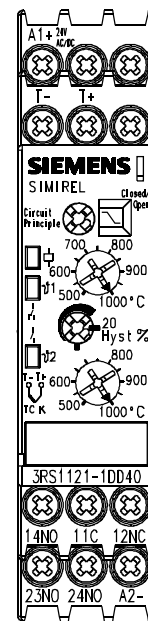
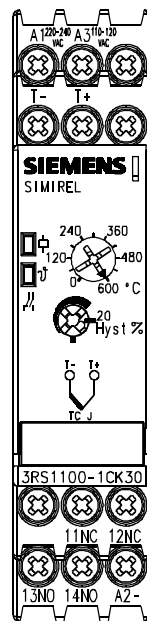
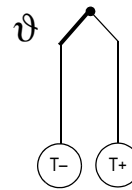


3RS1000; 1010

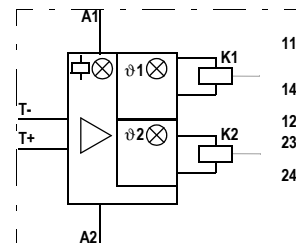


3RS1020; 1030

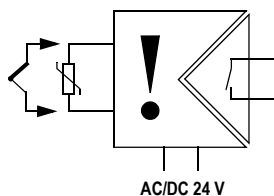
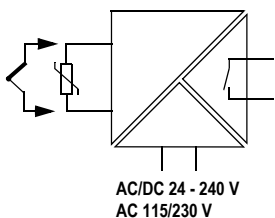
**TC Type J
Type K**



**3RS1100; 1110
3RS1101; 1111**



**3RS1120; 1130
3RS1121; 1131**

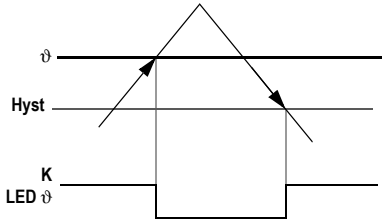


keine galvanische Trennung!
without galvanic isolation!
sans isolation galvanique!
¡No hay aislamiento galvánico!
senza separazione galvanica!
sem isolamento galvânico!

Temperaturmodus Überschreitung
 Temperature mode overshoot
 Dépassement haut de température
 Modo Rebase por alto de temperatura
 Modalità temperatura superamento verso l'alto
 Ultrapassagem do valor máximo do modo de temperatura

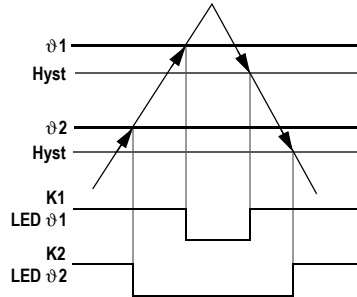
3RS1000; 1100; 1101

Ruhestromprinzip
 Circuit principle closed
 Courant de repos
 Circuito cerrado
 Corrente di riposo
 Princípio da corrente em repouso

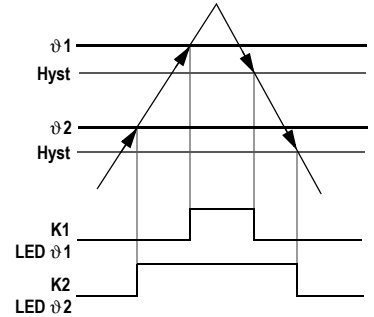


3RS1020; 1120; 1121

Ruhestromprinzip
 Circuit principle closed
 Courant de repos
 Circuito cerrado
 Corrente di riposo
 Princípio da corrente em repouso



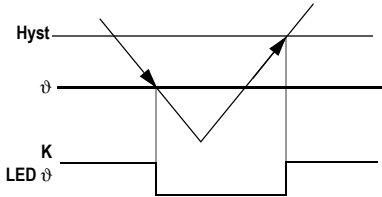
Arbeitsstromprinzip
 Circuit principle open
 Courant de travail
 Circuito abierto
 Corrente di lavoro
 Princípio da corrente de trabalho



Temperaturmodus Unterschreitung
 Temperature mode shortfall
 Dépassement bas de température
 Modo Rebase por bajo de temperatura
 Modalità temperatura superamento verso il basso
 Ultrapassagem do valor mínimo do modo de temperatura

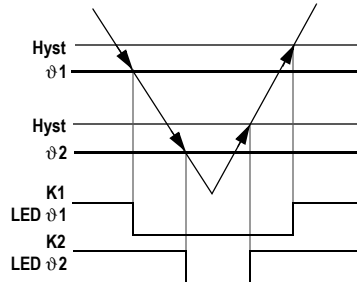
3RS1010; 1110; 1111

Ruhestromprinzip
 Circuit principle closed
 Courant de repos
 Circuito cerrado
 Corrente di riposo
 Princípio da corrente em repouso

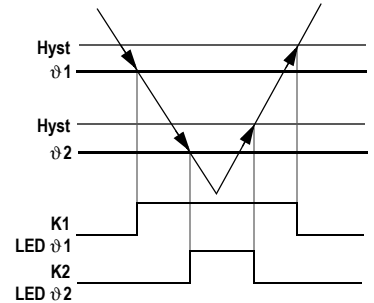


3RS1030; 1130; 1131

Ruhestromprinzip
 Circuit principle closed
 Courant de repos
 Circuito cerrado
 Corrente di riposo
 Princípio da corrente em repouso

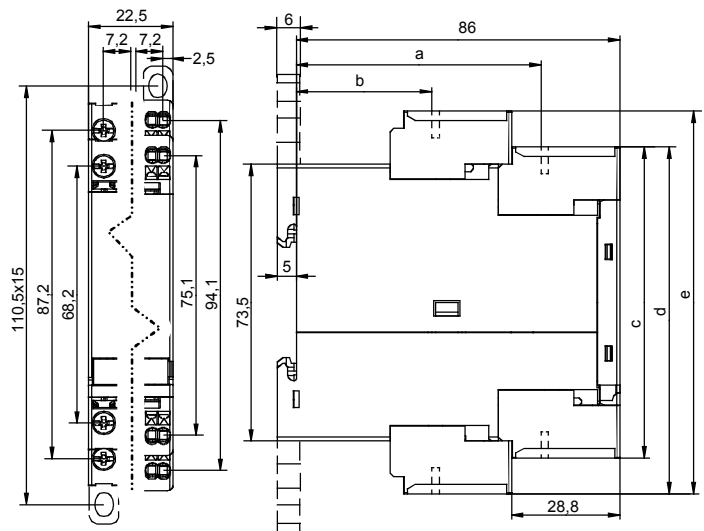


Arbeitsstromprinzip
 Circuit principle open
 Courant de travail
 Circuito abierto
 Corrente di lavoro
 Princípio da corrente de trabalho



	3RS1...-1	3RS1...-2
	0,8 ... 1,2 Nm 7 to 10,3 lb-in	—
Ø 5 ... 6 mm / PZ2	—	—
	1 x 0,5 ... 4,0 mm ² 2 x 0,5 ... 2,5 mm ²	2 x 0,25 ... 1,5 mm ²
	2 x 0,5 ... 1,5 mm ² 1 x 0,5 ... 2,5 mm ²	2 x 0,25 ... 1,5 mm ²
	—	2 x 0,25 ... 1,5 mm ²
AWG	2 x 20 to 14	2 x 24 to 16

	a	b	c	d	e
3RS1...-1...	65	36	82,6	92,2	101,6
3RS1...-2...	—	—	84,4	93,9	103,4



Technical Assistance: Telephone: +49 (0) 911-895-5900 (8⁰⁰ - 17⁰⁰ CET)
 E-mail: technical-assistance@siemens.com
 Internet: www.siemens.de/lowvoltage/technical-assistance

Fax: +49 (0) 911-895-5907

Technical Support: Telephone: +49 (0) 180 50 50 222